

Holland Community Housing Corporation
Seniors' Housing

McGREEVY MANOR



March 2024

Board of Directors and Resource Personnel

Board of Directors

Lucie Lachance, *President*

Bridget O'Connor, V.P.

Mike Boden, *Treasurer*

Beulah Smith-Evans, *Tenant*

Jeanne Chambers, *Tenant*

Tim Kennedy

Catherine O` Gallagher

Jennifer Johnson

Patricia Conabree, *Tenant*

Resource Personnel

Daniel St-Germain, *Action-Habitation*

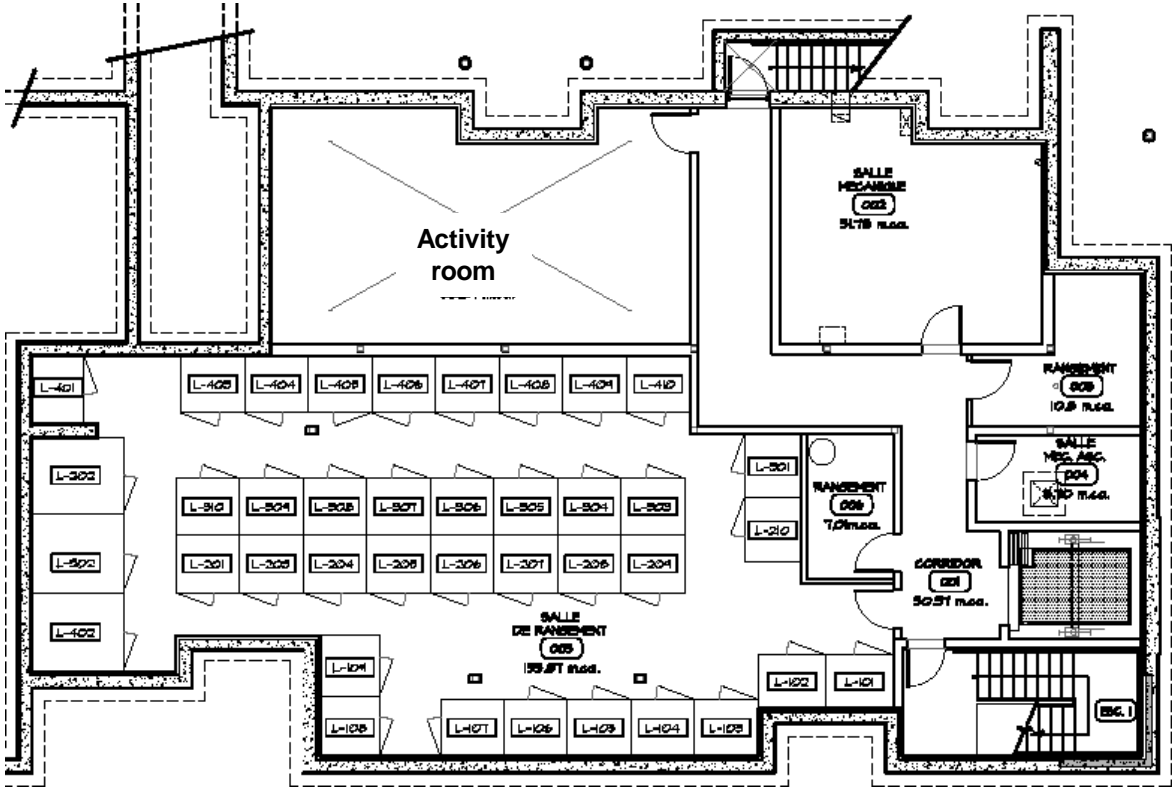
Nectaria Skokos, *Jeffery Hale Community Partners*

Richard Walling, Jeffery Hale Community Partners

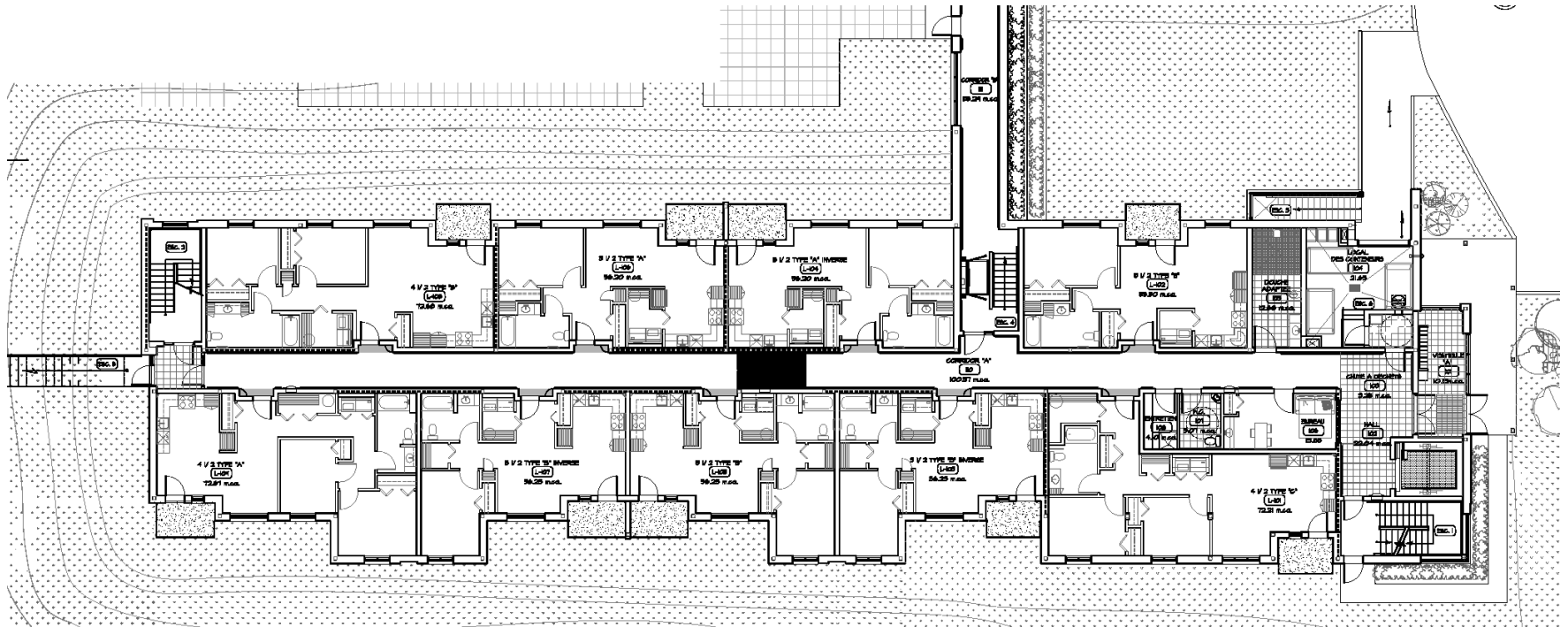


APARTMENT COMPLEX

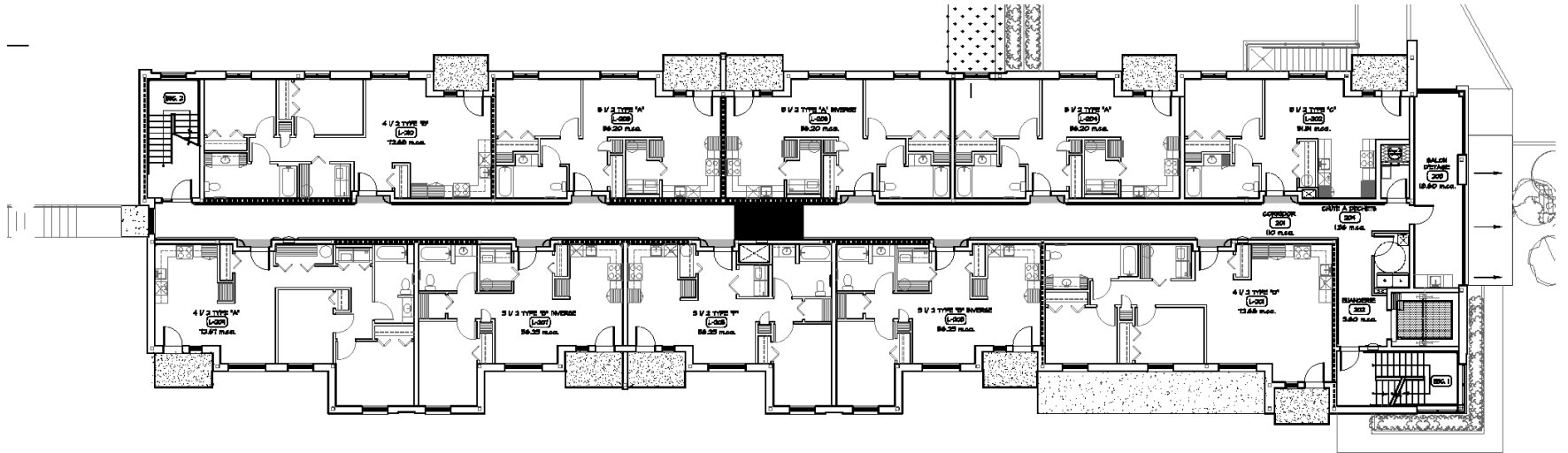
Basement



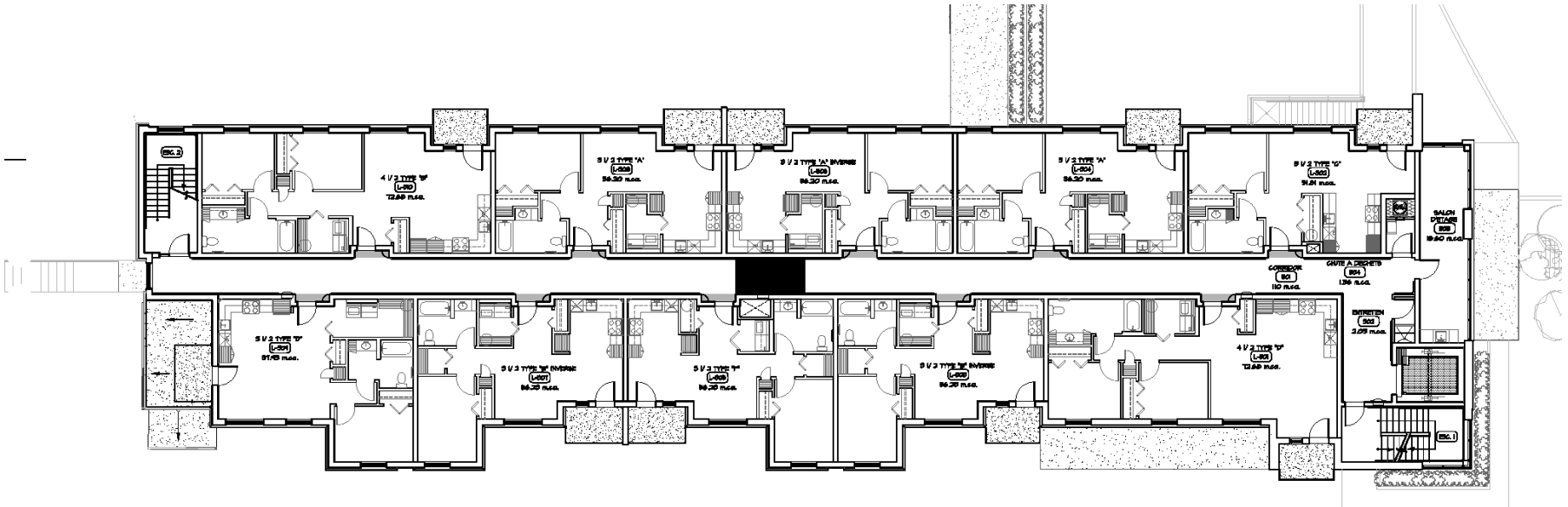
1st Floor



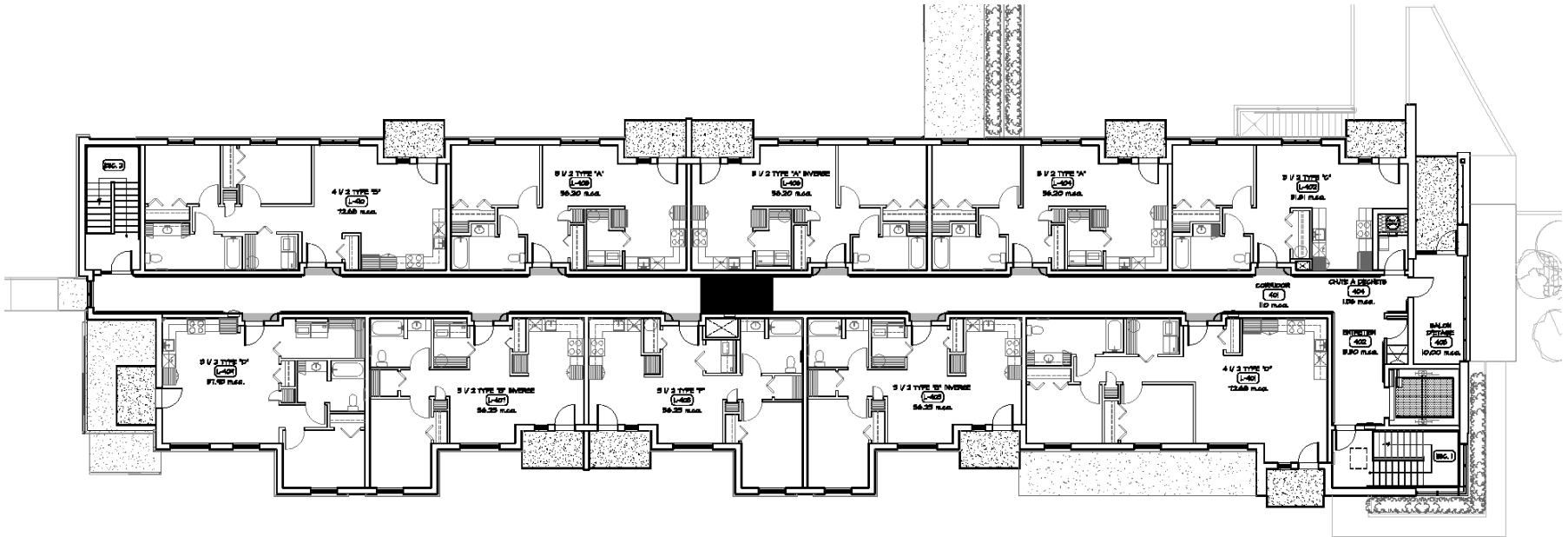
2nd Floor



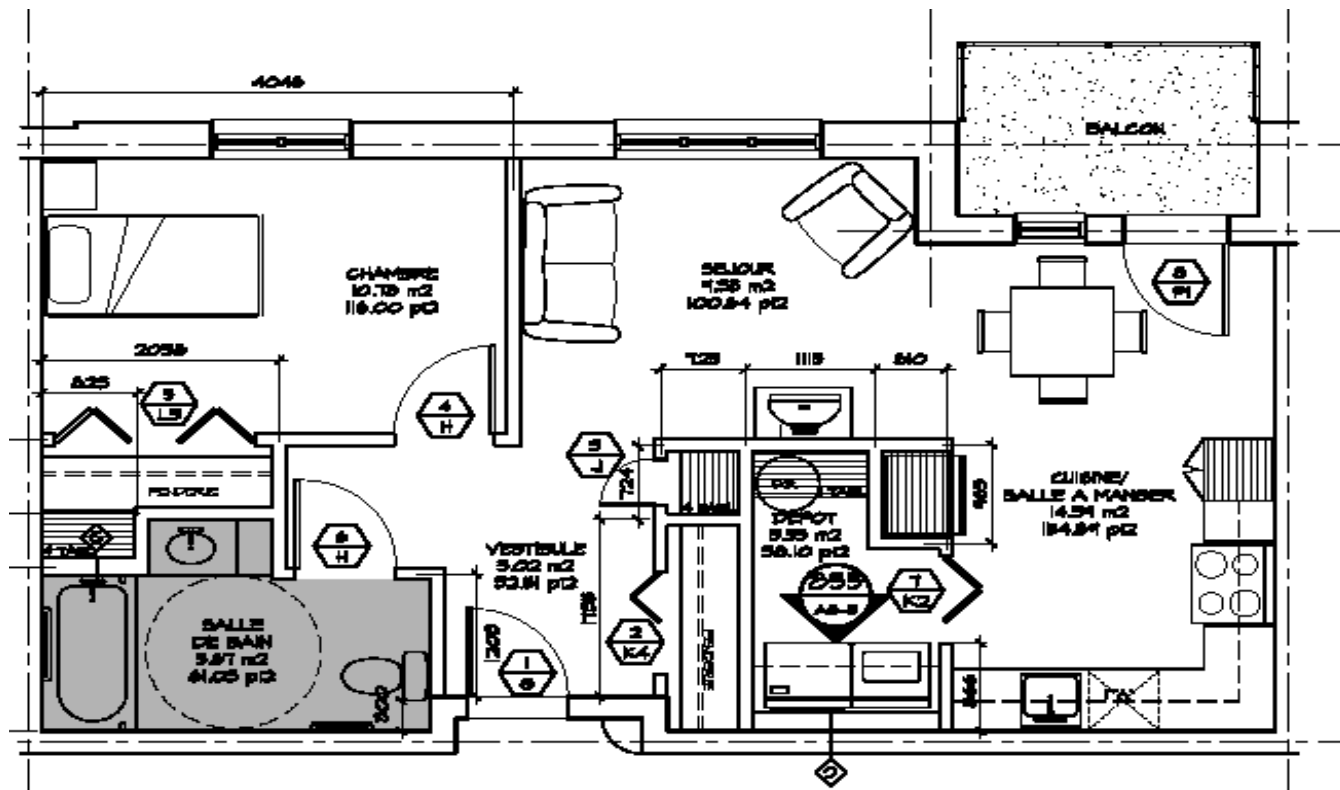
3rd Floor



4th Floor



3 1/2 Type A

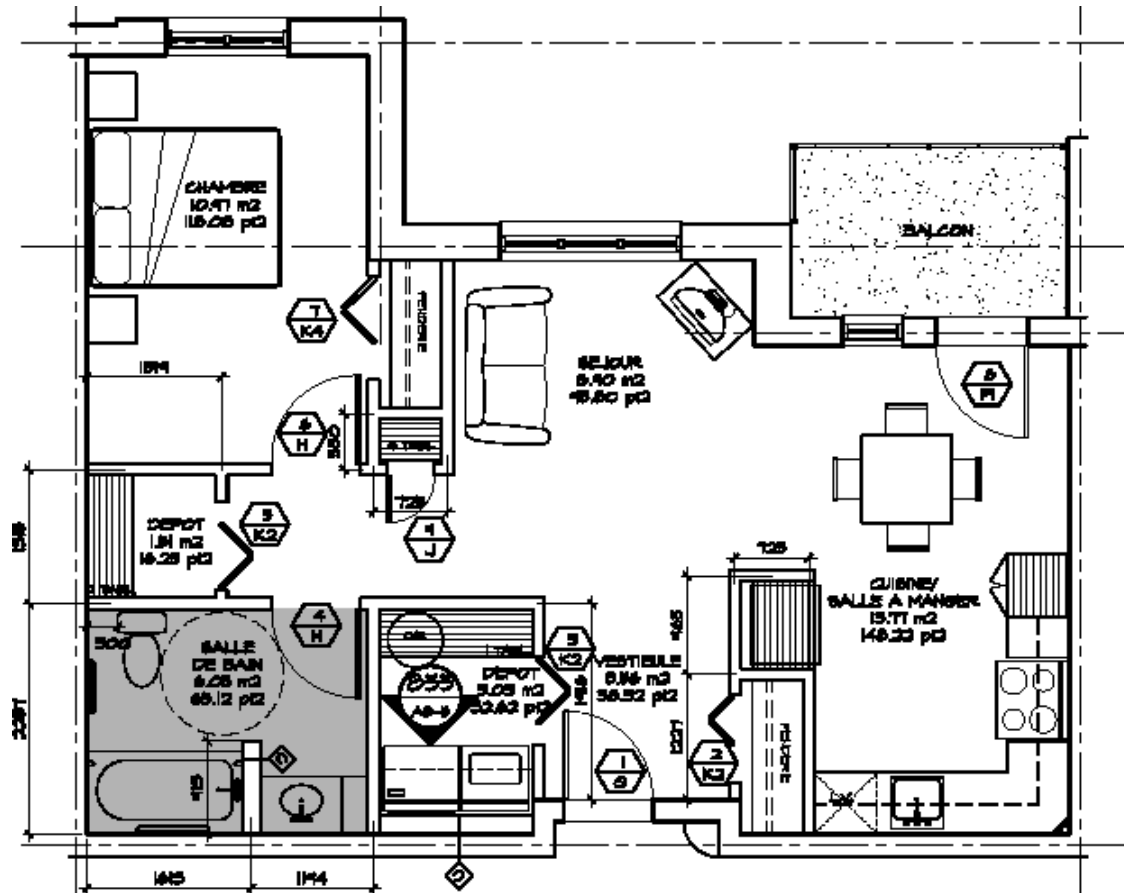



3 1/2 TYPE "A"
 ECHELLE 1:50 56.20 m.c.a.

3 1/2 TYPE "A"

L-106	L-204	L-304	L-404
L-206	L-306	L-406	

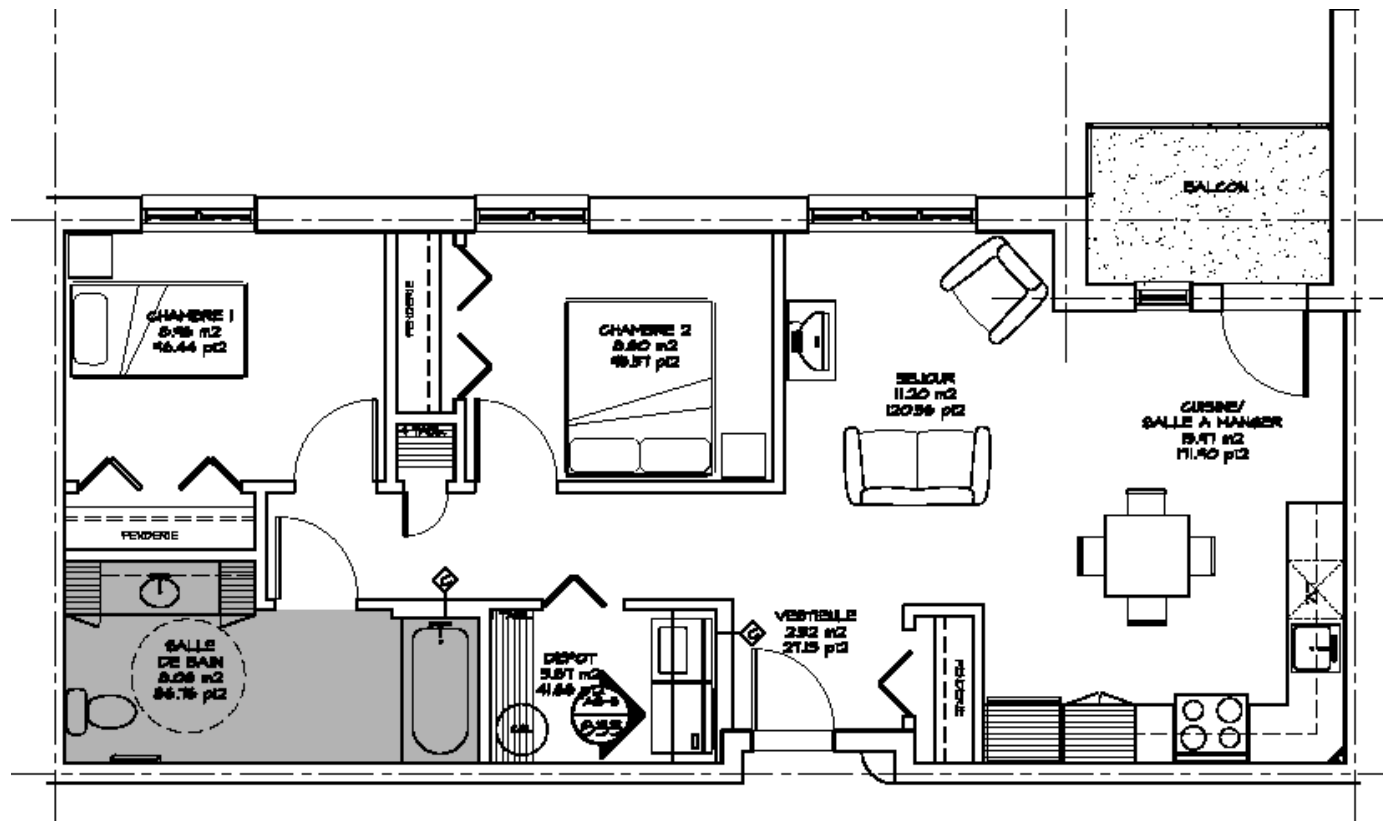
3 1/2 Type B



712 3 1/2 TYPE "B"
ECHELLE 1:50 58.25 m.ca.

3 1/2 TYPE "B"
L-105

4 1/2



725 4 1/2 TYPE "B"

4 1/2 TYPE "B"
L-108 | L-210 | L-310 | L-410

Services

- Elevator;
- Garbage chute on each floor and weekly recycling;
- Access to: the Saint Brigid's Home Cafeteria (fees apply); the chapel
- Live-in Caretaker;
- On-site Coordinator, 3 days/week;
- Common rooms (Basement Activity Toom, 2nd floor, 3rd floor, 4th floor);
- Laundry room – 2nd Floor (fees apply);
- Call-bell in each apartment;
- Snow clearing of the common areas;
- Therapeutic shower on the 1st floor;
- Outdoor parking for tenants who are owners of a car (fees apply);

Rental Cost

The monthly rent DOES NOT include electricity, hot water, heating and cable service.

Rent

3 ½ : \$ 747/month (\$754 as of July 1)

4 ½ : \$ 881/month (\$890 as of July 1)

Parking fee: \$ 30/month (\$32 as of July 1)

Rental subsidies

- 20% to 50 % of the apartments can be subsidized under the rental supplement program of the Office Municipal d'Habitation de Québec (OMHQ); Final decisions on applications are made by OMHQ.
- The cost of a subsidized apartment is equivalent to 25% of a tenant's revenue.
- If you are interested in a subsidized apartment, it is very important to make your request at the OMHQ at the same time as your request at McGreevy Manor.

Selection Criteria

- Age 65+;
- Income level;
- Level of Autonomy;
- Psychosocial elements (caregiving, volunteering, isolation) – Why do you want to live at McGreevy Manor?

Key Rental Rules

- Non-smoking facility;
- Pets allowed (1 per apartment);
- Apartment sitting / Sub-leasing forbidden;
- Rental of Parking spaces: only to tenants who are owners of a car (must drive it);