



McGreevy Manor

Holland Community Housing Corporation
Seniors' Housing

August 2023

Board of Directors and resource personnel

Board of Directors

To be determined, President

Lucie Lachance, Vice-President

Mike Boden, Treasurer

Beulah Smith-Evans, Tenant

Bridget O'Connor

Catherine O'Gallagher

Jeanne Chambers, Tenant

Jennifer Johnson

Patricia Conabree, Tenant

Tim Kennedy

Resource Personnel

Daniel St-Germain, Action-Habitation

Nectaria Skokos, Jeffery Hale Community Partners

Richard Walling, Jeffery Hale Community Partners



Basic information and services

- 39 apartments on 4 floors: 29 3-½'s and ten 4-½'s
- Locker storage in the basement
- Elevator
- Garbage chute on each floor and weekly recycling
- Access to the Saint Brigid's Home Cafeteria (fees apply) and the chapel there
- Live-in Caretaker
- On-site Coordinator, 2-3 days/week
- Common rooms (basement activity room, 2nd floor, 3rd floor, 4th floor)
- Laundry room on the 2nd floor (fees apply)
- Call-bell in each apartment
- Snow clearing of the common areas
- Therapeutic shower on the 1st floor
- Outdoor parking for tenants who own a car (fees apply)



Monthly rental cost

The monthly rent DOES NOT include electricity, hot water, heating, parking, or cable service.



3-½

\$747/month



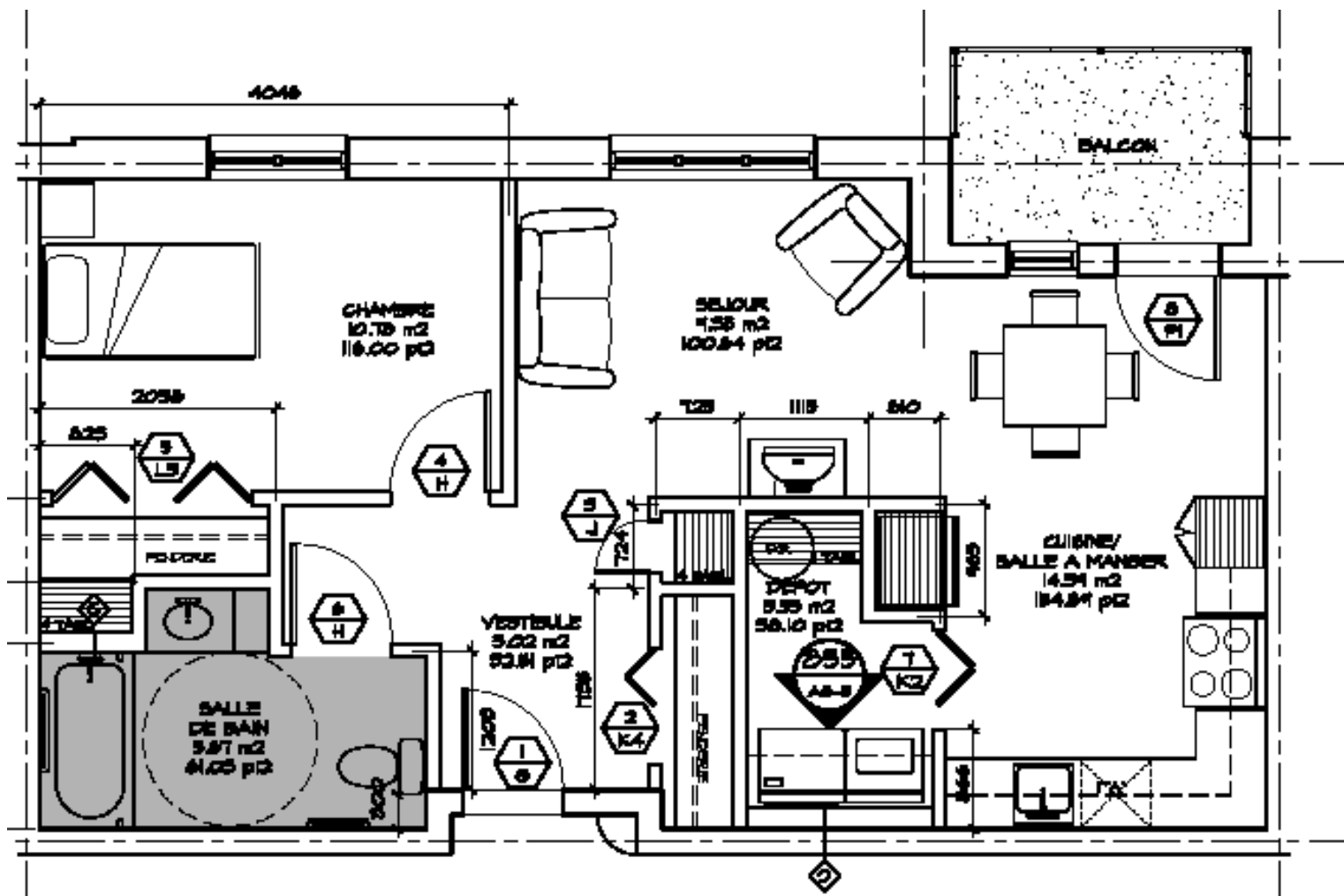
4-½

\$881/month

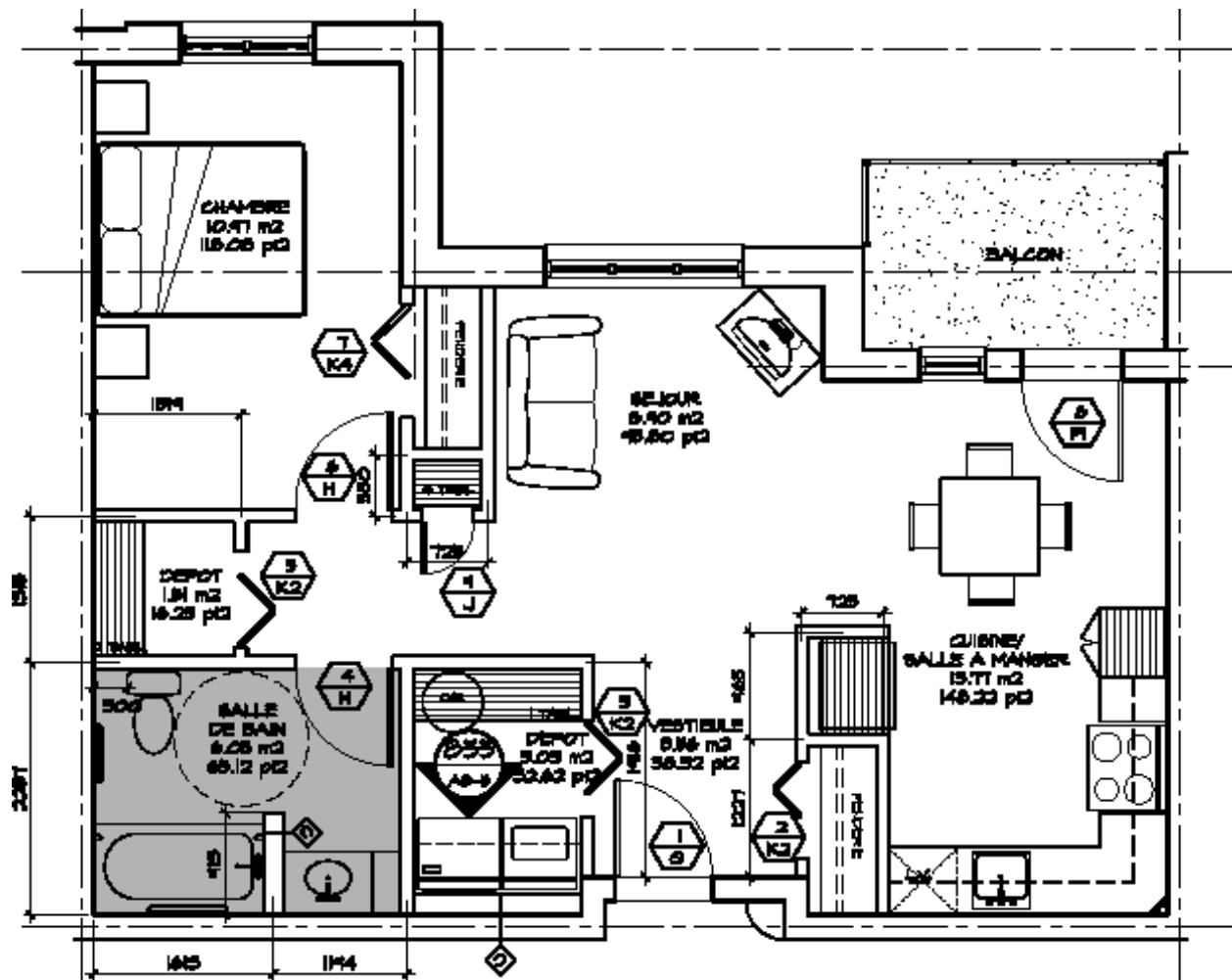


Parking fee:

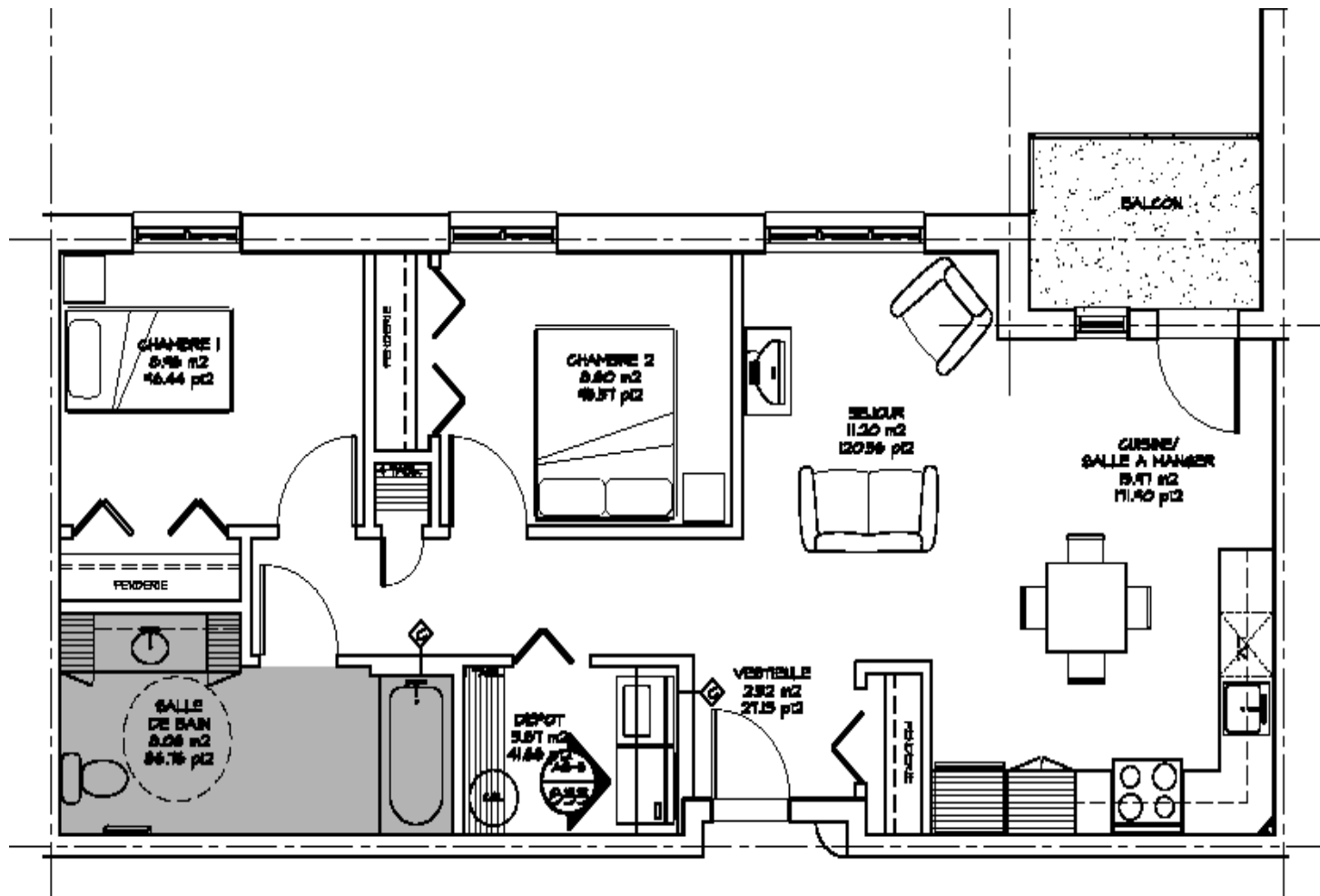
\$30/month



3-½ Type A floor plan



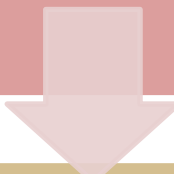
3-½ Type B floor plan




4-½ floor plan

Rental subsidies

20% to 50% of the apartments can be subsidized under the rental supplement program of the Office municipal d'habitation de Québec (OMHQ), and they make the final decisions on applications for a subsidy.



Top income bracket eligible for a subsidy: \$34,500
AND total personal capital must be less than \$60,000



The cost of a subsidized apartment is equivalent to 25% of a tenant's revenue.

If you are interested in a subsidized apartment, it is very important to make your request to the OMHQ at the same time as your request at McGreevy Manor.

Selection criteria

Age 75 + (people younger than 75 may be eligible)

Income level

Level of Autonomy

Comfortable in an English-speaking environment

Psychosocial elements (caregiving, volunteering, isolation, etc.) – Why do you want to live at McGreevy Manor?



Key rental rules

- Non-smoking facility
- Pets allowed (1 per apartment)
- Apartment sitting / sub-leasing forbidden
- Rental of parking spaces: Only to tenants and the tenant must be both the owner and the driver of the car

